

TECHNICAL DATA

Palisades Wood

Product Overview

Palisades Wood provides a customizable and modular zone divider that embodies this balance, providing a warmer, more biophilic feel while allowing for flexible layouts without the need for building walls. Palisades Wood enables the attractive division of space into designated zones and neighbourhoods tailored to specific working styles. With its natural textures and tones, Palisades Wood not only enhances the aesthetic of the workspace but also fosters a calming atmosphere that encourages creativity and collaboration. The system comes with a wide range of sizes, finishes, and accessories—including biophilic elements, acoustic panels, lighting, and storage—ensuring that it delivers essential privacy while enhancing the overall acoustic experience. By maintaining an open connection to the environment, Palisades Wood creates an inviting space that supports productivity and well-being.

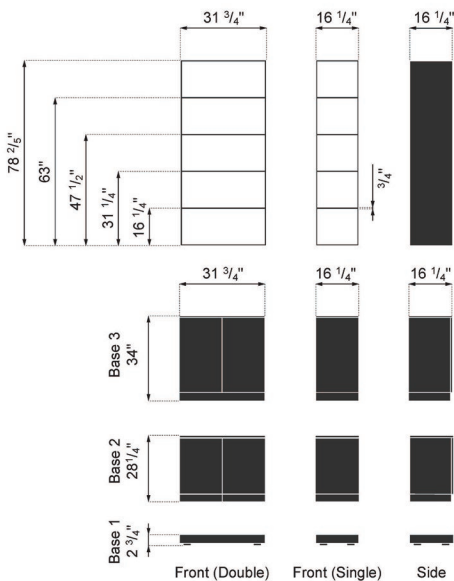
Dimensions

Shelves

31 3/4" w x 16 1/4" d (inches)

Alcoves

31 3/4" w x 16 1/4" d x 16 1/4" h (inches)



Environmental Summary

During the development journey we always kept our environmental impact in mind. This is demonstrated in the following key features of the design when the product is purchased with the recommended finishes:

- All materials used are LBC 3.1 Red List Compliant, an extremely stringent standard
- Product lifecycle – the products are designed to be modular and reconfigurable to cater for future needs without wastage and using more resources.

Safety

Lifting

Product must be handled by 2 operatives.

General safety

- All maintenance and repair tasks must be performed by appropriately qualified and authorized technicians.
- Only use tools that are appropriate for these tasks.
- For longer periods of absence or if there is a thunderstorm, unplug the power supply cable from the power outlet to avoid damage due to grid-related over-voltage.

Structural

Adjustable levellers on the product have up to 13/16" / 20mm tolerance.

Seismic

To address the need for any required seismic regulations, this product can be fitted with brackets, managed per project with the Project Manager.

Stability

For 2, 3, and 4 high configurations, must have one full-width back panel. For 5-high, must have two full-width structural back panels, to ensure stability.

Weights

Max weight loading per shelf - 22lbs

Castors have a weight limit of 37lbs

Shipping

Shipping dims/weight/packaging are dependant per project - please enquire.