



# Portals Connect

A customizable and private video conferencing space with every need of the user catered to, enhancing and optimizing the video call experience.

**Spacestor**

# Key Features

## Visual Privacy

Optional visually obscured glass panel with frosted film allowing for privacy and avoiding any external visual distractions for the user.

## Control Panel

User controls for the height-adjustable table, separately adjustable monitor height, fan speed and light dimming control. Designed for easier differentiation and dexterity.

## Ergonomics

Height-adjustable table supports ergonomic postures; both sitting and standing. Separately height-adjustable monitor means users can set up their optimal viewing angle.

## Acoustics

Speech intelligibility privacy and comfort acoustics provided by high acoustic performance materials and drop-seal.

## MEP Coordination

Easy integration of MEP components including sprinklers and electrics.

## Ventilation

User-adjustable airflow

## Lighting

User-adjustable spotlights and bias lighting for the optimal focus and virtual meeting experience. Bright, non-directional bias light, creates the best viewing experience, and ensures the user looks their best on-camera.

## Audiovisual

All mounting battery and connections supplied for any screen, along with integral cable tidy and provision for USB-C charging point and power lead.

## Accessibility

Level threshold for easy access

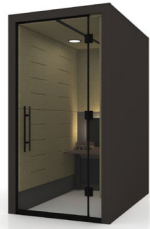




# Portals Connect

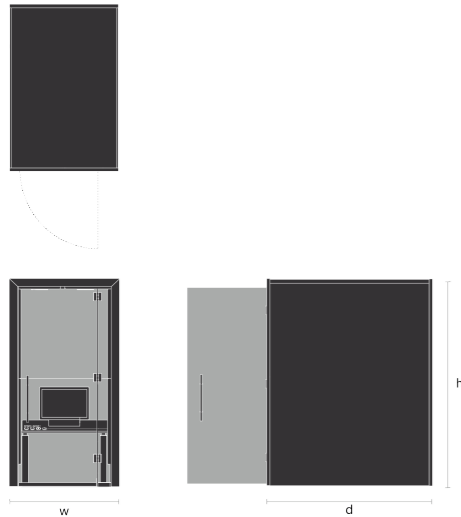
A customizable and private video conferencing space with every need of the user catered to, enhancing and optimizing the video call experience.

## Variations



Rear Entry  
PTC-DDA

## Dimensions



Rear Entry  
Depth: 71"  
Height: 88" / 94"  
Width: 47¼"  
Table Height Range: 24" - 46"

## Cladding Finishes

### Lacquered Plywood

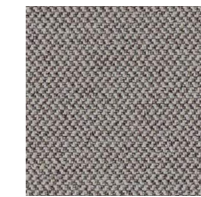
**HPL 1:** Frosty White, Black, Natural Maple  
**HPL 2:** Brite White, Designer White, Dove Gray, Citadel, Pewter, Graphite, Navy Blue, Blueberry Taffy, Matrix Blue, Winter Sky, Cassis, Spectrum Red, Clementine, Chrome Yellow, Fossil, Spectrum Green, Finnish Oak, Danish Maple, Oiled Walnut, Earthenware, Oyster Gray, Pumice, Carbon Mesh  
**HPL 3:** Otter, New Burgundy, Just Rose, Fawn Cypress, Millennium Oak, Neowalnut, Walnut Heights, Blackened Legno, Field Elm, White Ash, Blush, Green Slate  
**HPL 4:** Bleu Rada, Azzuro Pervinca, Verde Lauro, Rosso Lord, Dark Verde Oliva

**LPL 1:** White  
**LPL 4:** Black, Fog Grey, Hardrock Maple  
**LPL 5:** Arctic Groovz, Cotton White, Pelee Island Pear, Rogue Valley Pear, Willow, Charcoal, Storm, Talas Cherry  
**LPL 6:** Ashen, Celadon, Duke, Linear Ash, Mist, Mysterious, Noce Vettore, Roja, Sienna, Verde, Adobe, Enigma, Karuna Ash, Quarry  
**LPL 7:** Alabaster, Ginger

## Upholstery finishes

**Group 3:** Camira Main Line Flax, Camira Synergy  
**Group 4:** Camira Blazer, Kvadrat Remix 3, Kvadrat Melange Nap, Kvadrat Clara 2, Kvadrat Hero  
**Group 5:** Kvadrat Steelcut Trio 3, Kvadrat Canvas 2, Kvadrat Hallingdall 65

### Recommended SkinPerfect Upholstery Palette



**Wall Panels**  
Camira Era  
Generation CSE02  
LRV 24.51%



**Ceiling**  
Camira Era  
Futurist CSE01  
LRV 49.88%



**Behind the Screen**  
Camira Era  
Futurist CSE01  
LRV 49.88%

## Technical Specification

- User-adjustable spotlights & bias lighting
- User-adjustable airflow & ventilation
- Separately height-adjustable desk and monitor
- ADA width door opening
- Step-free access allows for greater accessibility & inclusivity
- Privacy film available with an optional upcharge
- 2 year warranty on electrical parts, 5 year warranty on all structural elements (subject to normal conditions of use and care)
- Plug-and-play, one standard soft-wired power outlet needed
- Upholstery complies with CA TB 117-2013 and SB 1019
- Seismic anchoring options available
- Acoustic DSA rating (speech intelligibility) to a minimum of 22.7 dB









# CALIFORNIA COOL



# LONDON DESIGN

+1 (310) 410-0220  
us.sales@spacestor.com  
www.spacestor.com